

## Personal Profile:

- Proactive and creative researcher
- Experienced in working independently
- Ability to meet deadlines and accurate recording and analysis
- Teaching experience with people with learning disabilities and a varied age range
- Excellent communication skills, both written and verbal
- Organised, resilient, and efficient
- Ability to network with various institutions to take on a thorough and precise approach to projects to yield positive results
- Practising fine artist specialising in video installation/site-specific work
- Volunteering as Chair Governor provides opportunity to develop leadership and management skills

## Research Interest:

My main interest remains within the field of fine arts together with the framework of theory involving Sartre (2003), Foucault (1977) and Bandura (1994), which informed the research activity in the action research undertaken. This provides an analysis towards the effectiveness of contemporary art practices as a valid tool (approach) in the contexts of education and its role in social exclusion environments. This also includes the fine arts significance as a broader approach in core education settings and external organisations. Moreover, develop further research into the key elements found present in the treatment of the participants which were; 1) separation that is used as a function and 2) space that is used for placement.

## Education

### United Kingdom:

**Buckinghamshire New University, Design Media & Management**

1<sup>st</sup> Supervisor: Professor Juliet Simpson  
2<sup>nd</sup> Supervisor: Dr Nadia Wager

**Thesis Title: An Exploration of How Visual Art can be used to Prepare Marginalised Youth for a Positive Future Using Mixed Human Inquiry Methodologies**

- Carried out action research in Reading, UK

*(2008 – 2016)*

### Brief Synopsis:

The overarching research explores how and if using contemporary art education and practices can help to reintegrate marginalised youth and to raise their sense of self-efficacy. This has an impact on young people engaged within educational institutions, the criminal justice system, and organisations in our communities. The framework of theory involving Sartre (2003), Foucault (1977) and Bandura (1994) informed the research activity in the action research undertaken. In today's society there are apparent gaps in relation to the discourse of aesthetic and ideology of cultural values regarding the fine arts and discourse of past and present diversity with sub cultures within our society,

The researcher considers how the work of Foucault can contribute to the underpinning power structures and identifies the success of the arts in the Special Unit at Barlinnie Prison. In relation to the individual as subject matter, Sartre (2003) was chosen in respect to an existentialist's conception of freedom. In order to provide a contrast with Sartre's existentialism a connection is made to Bandura's (1994) theory of self-efficacy as another viewpoint regarding artists and their work.

The research design of this particular action research project involves selected research methods incorporating contemporary 'art-based' practices and case studies. It is guided by the interpretive paradigm. The research focused on a group of individuals who were involved in a programme, 'The Learning Alliance Entry to Employment'. Amongst various findings, it had become apparent that during the action research a key finding highlighted the displacement of the participants within the educational institution, which mirrored their exclusion.

### Bracknell and Wokingham College

City and Guilds Level 3 Award in Education and Training  
*(January 2014 – April 2014)*

### Buckinghamshire New University

Certificate in Preparing for Teaching in Higher Education  
*(2009: six month duration)*

### Winchester School of Art

MA Fine Art by Project  
*(2004 – 2005)*

### Winchester School of Art

BA (Hon's) Visual Art  
*(2000– 2004)*

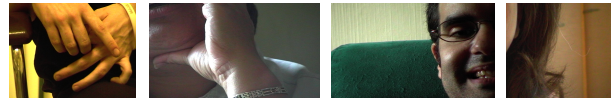
### United States:

#### The Art Institute of Philadelphia

Specialised technology:  
Graphic Design; Fashion Merchandising

Education included:

Foundation in Fine Art; History of Art; Drawing; Painting;  
3D Design; Sculpture



## Key Skills

- Proficiency in all areas of Final Cut Pro, Adobe Photoshop CS6, Premiere, After Effects, Microsoft Word, PowerPoint, Excel
- Solid foundation background in drawing, painting, 3D design, printmaking, photography and video

## Teaching Experience

### Socially Inclusion Funded Projects:

#### Workshop Facilitator for Visual Art

Building Respectful Families Programme  
Oxfordshire Child on Parent Violence Project  
(2016 - 2018)

#### Workshop Facilitator for Visual Art

SAFE! Project Support for Young People  
Affected by Crime Oxfordshire  
(2016)

#### Workshop Facilitator for Visual Art and Filmmaker

Building Respectful Families Programme  
Oxfordshire Child on Parent Violence Project  
(2015)

#### Project Manager and Lead Artist

Time Tunnels: Celebrating the history of Great Hollands, Bracknell  
(2013 - 2014)

#### Notable Projects:

(2014) Working with the local council EFI project and Thai Community for ESOL sessions

#### Resident Artist

Baylis Court Nursery, Slough including engaging parents for necessary involvement  
(2008 - 2020)

#### Notable Projects:

(2015) Funded APNA VIRSA project – Art taster sessions (parents involvement necessary)

(2012-13) Funded 'Let's Colour Project - Deluxe' (parents involvement necessary)

(2007) Who Are You In A Defined Environment (parents involvement necessary)

#### Workshop Leader and Researcher

World of Difference UK Programme to work with The Ark Trust Ltd. Bracknell  
(2011)

#### Notable Projects:

(2011 - 2018) Run a Fine Art workshop

(2017) Erasmus+ Funding: KA104 Job Shadowing

(2017) Community Project: Elm Park flower beds

(2016 - Present) Social Media Project: Escondidas  
Culture/Hidden Culture: Two

Schools/Two

Cultures Dos Escuelas/Dos Culturas

#### Visiting Artist (*What Women Want*)

SPACE Counselling Service, Slough  
(2007)

#### Resident Artist (*After School Clubs*)

Godolphin Nursery, Infant, Junior Schools: Lottery Funded, Slough  
(2006-2008)

#### Artist (*Foundation Journey A Photographic Experience (parents involvement necessary)*)

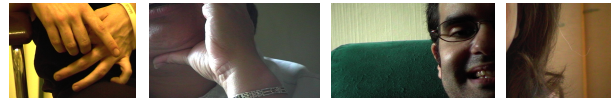
Wexham Court School; Creative Partnership, Slough  
(2005)

#### Artist (*Site-Specific Installation*)

Godolphin Junior School: Creative Partnership, Slough  
(2004)

#### Assistant Artist

Andrew Sabin for the Regeneration Project, Bracknell: "Materials in Transit"  
(2004)



---

## Academic and Professional Experience

---

### **Pinkie Mae Publications**

Owner, Writer, Publisher of *The Phenomenon of Fine Art and the Human Element Quarterly*  
(2021- present)

### **Eton Dorney Therapeutic School**

Providing contemporary art education methodologies and practices in Buckinghamshire to young people age 8 – 16 to support development of self-efficacy and practical skills.  
(2021- present)

### **Catch 22 and Include**

Providing contemporary art education methodologies and practices in Oxford and Bracknell to young people age 13 –18 to support development of self-efficacy and practical skills.  
(2017- 2021)

### **Assistant**

Research types of funding to support Ageing Well Conference & Movers & Shakers Community Showcase Event at Buckinghamshire New University  
(2014)

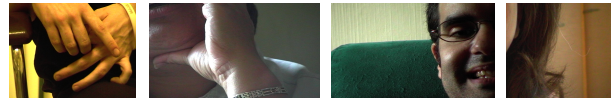
### **Project Manager**

Marsh and Micklefield Big Local Million: The Institute for Diversity, Research, Inclusivity, Communities and Society at Bucks New University  
(2012)

### **Evaluation**

Lankelly funded project for OCA and Maidstone Prison (2010)

---



## Additional Work History

### Artist

#### Written Introduction and designed layout for a Book: I'm Alright If The Stars Are Bright

SAFE! Project Support for Young People  
Affected by Crime Oxfordshire  
(2016)

#### Achievements and responsibilities:

- Design and write introduction for a workbook for social workers and young people affected by crime using participants artwork
- Facilitated a creative workshop with social workers and young people

### Chair Governor

The Education Committee for Calcot Services for Children (CSFC)  
(2014 – 2022)

### Chair Governor

Baylis Court Nursery School, Slough  
(2014 – 2022)

#### Achievements and responsibilities:

- Strategic overview challenge and development
- Support Head Teacher
- Overarching Development of robust governance
- Everyone well informed and all information up-to-date
- Recognise whistle blowing pathway

### Vice Chair Governor

Baylis Court Nursery School, Slough  
(2013 – 2014)

#### Achievements and responsibilities:

- Support Chair in role

### Community Governor

Baylis Court Nursery School, Slough  
(2010 – 2013)

#### Achievements and responsibilities:

- Attendance
- Use of skills to support committee

### Artistic Consultant

Gallery 435, Slough  
(2008)

#### Achievements and responsibilities:

- Overseeing exhibitions and workshops

### Internship Media Arts Coordinator

New Greenham Arts, Newbury  
(2006-2007)

#### Achievements and responsibilities:

- Successfully set up media suite to run workshops:
  - Introduction to Photoshop
  - Video for Beginners
  - Using Video as an Art Form
- Teach studio artists various software applications to aid in their work

### Lead Artist

Windsor and Eton Town Council  
(2005 - 2007)

#### Achievements and responsibilities:

- Overseeing lantern workshops in three schools for Christmas parade held at Eton and Windsor Town Centres

### Tutor

Bracknell and Wokingham College, Bracknell  
(1996-1998)

#### Achievements and responsibilities:

- Teaching art under Support Studies in course work for Diploma in Nursery Nursing

### Artist

Windsor Art Centre, Windsor  
(2004-2005)

#### Achievements and responsibilities:

- Working on various projects with schools in immediate area

### Artist

South Hill Park, Bracknell  
(1998-2005)

#### Achievements and responsibilities:

- Working on various projects in conjunction with South Hill Park: "Sparks at School"

### Workshops:

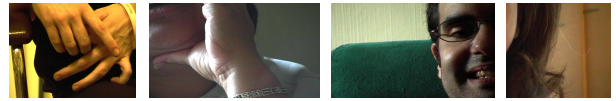
(1998-2005)

### Tutor

South Hill Park, Bracknell: introduced workshops working with three-six year including parents  
(1998-2005)

### Tutor

Windsor Art Centre, Windsor: working with five – seven year olds  
(2004-2005)



## Conference Presentations

### Crest Research Symposia

Poster presentation/ talk

(2012)

### Research Symposia, Buckinghamshire New University

Presentation/speaker (2009)

### Sacred, Liminal and Secular Space, Buckinghamshire New University

Presented a video installation

(2007)

## Awards and Scholarships

World of Difference Funding- UK

(2011)

The Berman Scholarship Fund – USA

(2008-2010)

## Solo Exhibitions

### “In Reflection Of...”

Projection onto Barclays Bank

Queensmere Shopping Centre, Slough

(2009)

### “In Witness of Yourself”

Video Installation

Queensmere Shopping Centre, Slough

(2006)

## Notable Projects

### Community Art Project: Running Horse Roundabout

Project Manager and Lead Artist: Executed project from beginning; including writing applications for funding working with schools and community towards change and awareness of biodiversity in unloved area

(2017 - 2018)

### North Ascot Community Project: What does Ascot Mean to Me?

Design and execute murals for TRAX Youth Community Centre

(2015 - 2016)

### Time Tunnels: Celebrating the history of Great Hollands

Design and execute murals on specific underpasses

Bracknell

(2013 - 2014)

### “Bracknell 2012”

Video Installation

The Ark Trust Ltd., Bracknell

(2012)

## Group Exhibitions

### Drawing Utopias

Iklectik Art Lab

London

(2016)

### The Sketchbook Project

Time Tunnels: Celebrating the History of Great Hollands

Documentation

Brooklyn Art Library, New York

Digitize

(2015)

### “Uncensored”

“How do you feel” What do you Think? A video essay”:

Gallery 435, Slough

(2008)

### “Trail of Belief”

Wokingham District Council Arena for the Arts in the Churches of Wokingham Town, Wokingham

### “I Wish It Could Be Christmas Everyday?”

Site-specific project, Wokingham

(2005)

### “Listen Within Silence”

Video Installation MA Show: Winchester School of Art

(2005)

### “Journeys”

Windsor Art Centre, Windsor

(2004)

### “Life Room”

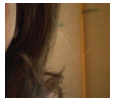
Video Installation BA Show: Winchester School of Art

(2004)

### “Blank Canvas”

Creative Partnership; The West Ring, Slough

(2004)



(2006)

**"I'm Dreaming of A White Canvas"**

A multi-media exhibition: Creative Partnership, Slough

(2005)

**"Blank Canvas"**

Creative Partnership; The West Ring, Slough

(2005)

**Visual Art Diploma Show**

Winchester School of Art, Winchester

(2003)

**"Towards An Image"**

New Greenham Arts, Newbury

(2002)

## Media

**World of Difference: Vodafone**

Interview for video presentation

(2011)

**BBC Radio Berkshire**

Twenty-minute interview with Henry Kelly

(2009)

**BBC Radio Berkshire**

Twenty-minute interview with Henry Kelly

(2006)

**Orangeskin Directed by Tatiana Seaman**

Artwork used in film

(2006)

## Publications

Oliver, V. (2021) Near the End: Reflection Reports Part II. *The Phenomenon of Fine Art and the Human Element Quarterly* 1 (2) pp5-7. Pinkie Mae Publications, UK. Available from: <https://www.linkedin.com/feed/update/urn:li:ugcPost:6836599451692400641/>

Oliver, V. (2021) Near the End: The Beginning of a Journey. *The Phenomenon of Fine Art and the Human Element Quarterly* 1(1) pp 4-9. Pinkie Mae Publications, UK. Available from: <https://www.linkedin.com/feed/update/urn:li:ugcPost:6770120009403445248/>

Oliver, V. (2017) Understanding Historical Changes in Social and Penal Art Programmes. *Journal of Offender Rehabilitation* [online] 56 (8) pp 511-533. Available from: <http://www.tandfonline.com/doi/full/10.1080/10509674.2017.1363115>

Oliver, V. (2017) Empirical Findings that Establish Researchable Context Using Visual Art to Prepare Marginalised Youth for a Positive Future Using Mixed Human Inquiry Methodologies. *Journal of Arts & Communities* 9 (2) pp.69-87. Intellect Limited. Available now 2019 from: [https://doi.org/10.1386/jaac.9.2.69\\_1](https://doi.org/10.1386/jaac.9.2.69_1)

## References

To be given upon request.